

Info

541 Division Street

Campbell CA, 95008

Phone (408) 374-7290 • FAX (408) 378-1068

Copyright © 1995 All rights reserved. No portion of this document may be reproduced without prior written authorization.

Info Performance Mouse

Copyright © 1995, All Rights Reserved

The material in this document is for informational purposes only, and is subject to change without notice. The manufacturer assumes no responsibility for errors or omissions in this document, nor any damages resulting from the use of the information contained herein.

Any trademarks, registration marks, or brand names mentioned within this guide are the property of their respective owners.

IPM1.590150

Performance Mouse

For Personal Computers

**Model IPM1
User's Guide**

Welcome

We believe the computer user expects sophisticated products that are easy to use, affordably priced, and improve the quality and convenience of their computing experience. Info has designed this product with that concept in mind.

This mouse includes advanced software that allows the user to customize its operations to personal or task-related needs.

Features Include:

- Cursor speed, color enhancement, and locator functions
- 52 function calls available through button/key combinations and fast access HotKeys
- Advanced Power Management support
- Right/Left Mouse button swap

System Requirements

In order to install and use the Windows Control Panel Driver, the system must be running Windows version 3.0 or higher. Operation of the Performance Mouse in DOS is described in the Appendix at the end of this guide.

Installation

Hardware

Install the mouse before installing the mouse software. Failure to do so may result in an error message.

Exit all programs and turn off the computer's power. Insert the device connector into the computer's 9-pin serial port. Take care to assure that the port and connector are properly aligned before inserting; Improper alignment will result in port damage. Use the provided 9- to 25-pin adaptor to connect the mouse to the 25-pin serial port.

Important: Conflicts between a pointing device and other hardware devices installed in a computer system will occur if they share an IRQ (Interrupt Request) setting. If an existing device within your computer system malfunctions after installing the pointing device, check for a shared IRQ setting.

For reference purposes, a serial port using COM port 1 or 3 will utilize IRQ 4 and a serial port using COM port 2 or 4 will utilize IRQ 3. In most cases, a PC's 9-pin serial port is set as COM port 1, and can be changed through hardware adjustment.

Consult your computer's manual for information about its serial port configuration.

Software

The device driver software provides the Performance Mouse's operational enhancements. Once this software is installed, it will override the mouse controls provided by Windows.

The instructions below assume that you are installing the driver on the system's A: drive. If you are installing on the B: drive, substitute "B" for "A".

To install the device driver and Control Panel software:

1. Insert the Driver Installation disk into drive A.
2. Select Run from the File menu in Windows Program Manager.
3. Type **A:\SETUP.EXE** at the command line and click OK. The Installation Menu window displays.
4. Select "Install Windows Mouse Driver" and click OK. The Setup window displays. To install the DOS driver as well, select "Install DOS and Windows Driver." Configuration and operation are described in the Appendix.
5. Click OK to accept the default directory, or enter a new directory and click OK. The Configure Windows Mouse Driver window displays.
6. Select one of the following:

Info 3-button Mouse (COM 1), if the mouse is connected to the 9-pin serial port.

Info 3-button Mouse (COM 3), if the mouse is connected to the 25-pin serial port.

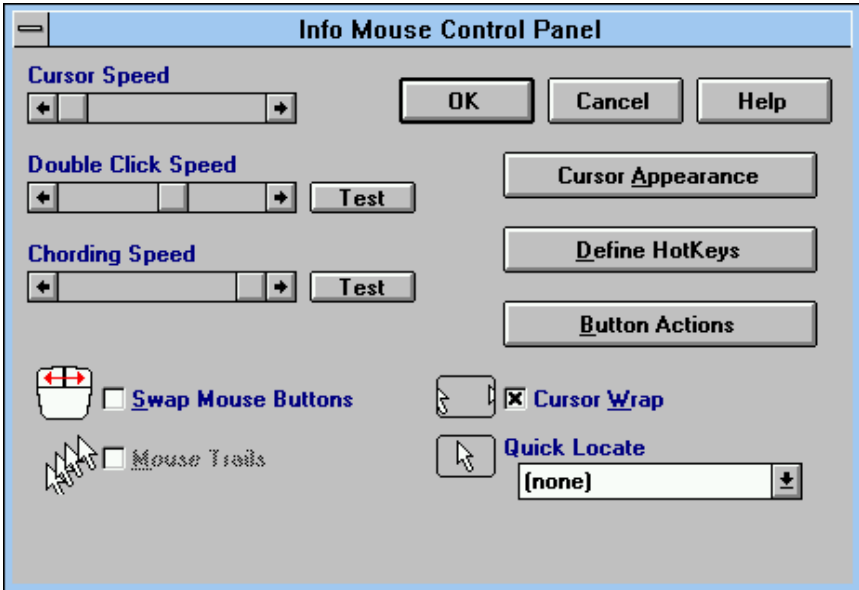
NOTE: You must select one of the 3-button choices to take advantage of the Performance Mouse's features. This is not a PS/2 device.

7. Click OK to exit the installation. Restart Windows for your changes to take effect.

The device driver and Control Panel software installation is now complete.

Operation

From Windows Program Manager, select the Info Mouse icon. Next, select Info Mouse Control Panel; From this window, mouse operation is defined. A description of the various controls is presented below.



The menus refer to the mouse buttons as primary, secondary, and middle. Typically, the left mouse button is primary and the right button is secondary. Selecting the Swap Mouse Buttons option reverses the designation: right becomes primary, and left becomes secondary.

Cursor Speed

This controls the speed of the cursor in relation to the physical movement of the device. The lowest speed setting causes the cursor to move only as fast as the mouse moves (with no acceleration). Progressively higher settings provide increased acceleration.

Double Click Speed

Use this control to distinguish the double-click of a button from two single clicks. The lowest value allows double-clicks to be spaced up to one second apart. The highest value allows only 0.1 second to elapse. Use the Test button located to the right of the speed bar as an adjustment guide. Point to the button and double click: If a double-click is detected (as opposed to two separate clicks), the button will change from light gray to black.

Chording Speed

When a HotKey (described later) employs multiple buttons, it is referred to as a "chord." The Chording Speed parameter establishes how much time can elapse between pressing successive buttons of a chord. Test the setting for comfort by placing the cursor in the Test box and then pressing any two buttons.

Swap Buttons

This command reverses (swaps) the functions of the left and right mouse buttons. For left-handed users, this feature makes the mouse easier to use.

Mouse Trails

When selected, this feature produces multiple exposures of the pointer, or a comet-like effect. When the check box selected, a slider bar appears that allows adjustment of the length of the trail. The maximum length supported by Windows drivers is seven cursor images. The minimum value that can be set with the scroll bar is one, meaning one cursor image behind the current move will be displayed.

This feature is available only with an EGA, VGA, or Super VGA video driver that is fully compatible with Microsoft Windows 3.1. Many hardware-specific accelerated drivers do not support this feature. In this case, the option will be disabled and clicking on the check box will have no effect.

Cursor Wrap

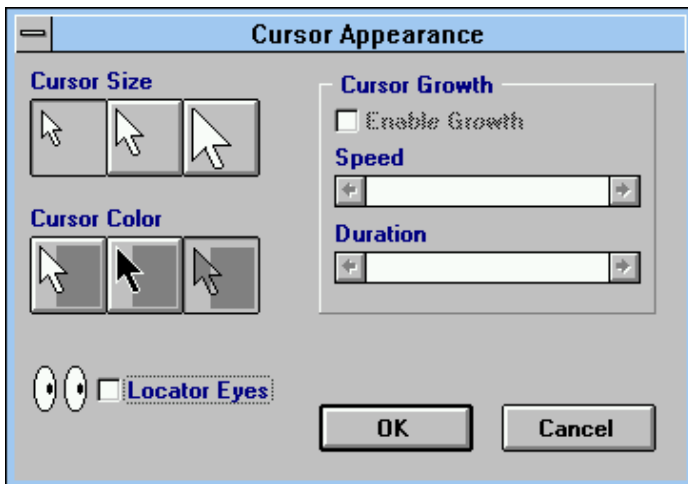
Cursor Wrap changes the behavior of the cursor at the edges of the screen. When this option is activated, instead of stopping at the edge of the screen, the cursor will reappear at the opposite side of the screen, continuing to move in the direction of the mouse movement.

Quick Locate

Quick Locate provides a means of finding the cursor when many windows are occupying a screen. When a HotKey sequence is entered, the cursor will immediately be positioned in the center of the screen.

Cursor Appearance

Click on the Cursor Appearance button to open the **Cursor Appearance** window.



Size: Select from three cursor sizes: Large (32 pixels), medium (24 pixels), and small (16 pixels).

Cursor Color: Three selections are available: Normal uses the standard white cursor with black outline. Reverse is the opposite, a black cursor with a white outline. Transparent inverts the color of the pixels underneath the cursor.

Both normal and reverse cursors are completely opaque, blocking out everything underneath. The transparent cursor inverts the color of the pixels underneath; If the cursor is located in a white area, it will appear black, in a black area, it will appear white, in a blue area, it will appear yellow, etc. This allows the user to see what is covered by the cursor while still contrasting it with its surroundings.

Locator Eyes: Used to facilitate location of the cursor at any time, this feature uses a representation of eyes which automatically track the cursor. Like spectators following the path of a tennis ball, these eyes follow the motion of the mouse's cursor. Multiple eyeball icons, up to four, may be activated.

Cursor Growth: With the selection a medium or large size cursor, the Cursor Growth option is available. This increases the size of the cursor when it is being moved. When the cursor stops, the size returns to normal. This is quite useful for easily tracking and locating the mouse cursor when moving it. When motion stops, it reverts to a size which does not obstruct view.

Speed determines the minimum speed at which the size of the cursor is enlarged. This establishes an acceleration threshold value above which the cursor will be enlarged, and below which the cursor will either remain small, or return to a small size after a short duration.

Duration establishes the delay after which the cursor will return to the small size. This duration period keeps the cursor from changing size too often if mouse motion hovers near the threshold.

Define HotKeys

Unlike the “in application” mouse button function definitions available under Button Actions (described later in this section), the HotKeys defined here provide unique “toggle actions” related specifically to mouse performance. Click on Define HotKeys to display the **HotKey Definition** window.

The screenshot shows the 'HotKey Definitions' dialog box. At the top, a message states: 'You must click OK before new HotKey settings will take effect.' The dialog is divided into three main sections:

- Ortho Axis:** Includes a radio button for 'Initial Axis Only' (which is selected), a radio button for 'Predominant Axis', a 'Modifier' dropdown menu set to '(none)', a 'Button' dropdown menu set to '(none)', and a 'Key' text box.
- Main Control Menu:** Includes a 'Modifier' dropdown menu set to '(none)', a 'Button' dropdown menu set to '(none)', and a 'Key' text box.
- Slow Cursor:** Includes a 'Modifier' dropdown menu set to '(none)', a 'Button' dropdown menu set to '(none)', a 'Key' text box, and a 'Braking Factor' slider.

On the right side of the dialog, there are three buttons: 'OK', 'Cancel', and 'Help'.

Ortho Axis: When using a pointing device to draw lines, it is often necessary to draw only in the horizontal or vertical dimension. This requires confining movement to a single axis, even if the mouse is moved slightly to either side of the axis. The Ortho Axis feature allows the user to enter a HotKey which temporarily limits cursor movement to a single axis.

Ortho Axis limits all movement to the axis along which the mouse is first moved after the HotKey was pressed. Use the same HotKey to return to normal operation.

Predominant allows only vertical or horizontal movement, but permits a change of axes without releasing the HotKey. The axis can be changed by making a large movement perpendicular to the currently active axis.

This function can be used from any Windows application. Use the same HotKey to return mouse operation to normal.

Main Control Menu: This option allows definition of a HotKey for direct access to the Info Mouse Control Panel from any Windows application. This eliminates the need to exit an application to make mouse operation adjustments.

Slow Cursor: In normal usage, cursor acceleration is different from pointing device acceleration. In other terms, the cursor will generally accelerate faster than the acceleration of the pointing device. The Slow Cursor feature allows users to temporarily clear the acceleration curve so that no matter how fast a pointing device is moved, the cursor does not accelerate and remains at a set speed. Additionally, a Braking Factor can be applied, slowing the cursor movement even more. As the Braking Factor is increased, the cursor moves progressively slower than the speed at which mouse is moved.

Slow Cursor mode can help provide fine control of cursor movement when performing a detailed task, such as setting the colors of individual pixels in a drawing program. Entering the HotKey again restores the cursor acceleration back to normal.

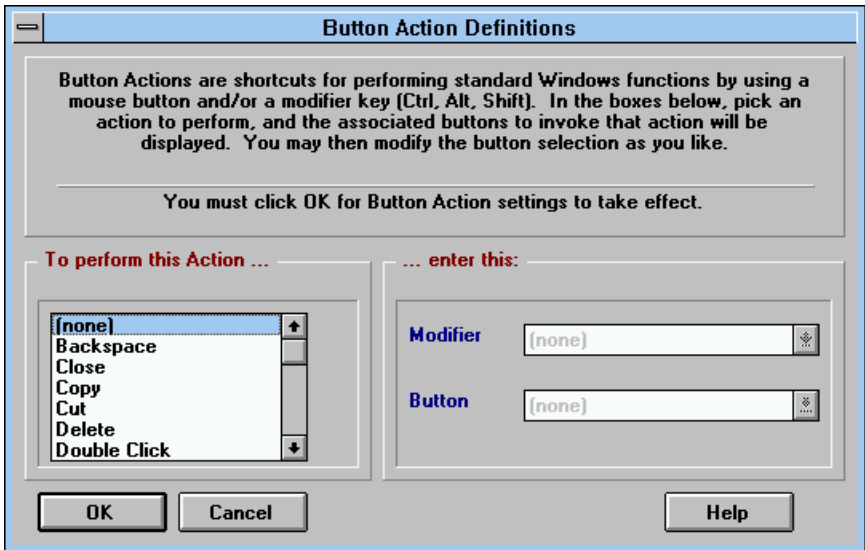
HotKey Programming Example:

1. In the Main Control Menu section, click on the Modifier dialogue box, and select Alt.
2. Click on Button and select Secondary (Secondary is the right mouse button).
3. Click OK.

The Info Mouse Control Panel can now be directly accessed by depressing the Alt key while clicking on the right mouse button. This will function from any Windows application.

Button Actions

The **Button Action Definitions** window provides the ability to assign Window's keyboard functions to a mouse button, or to a mouse button plus a keyboard modifier. The possible actions are listed in the list box on the left side of the window.



To assign keys and/or buttons to various actions:

1. Select the To Perform this Action... box.
2. Choose the key and/or button combination from the Modifier and Button boxes on the right. As with HotKeys, a unique combination of keys and buttons must be used for each command.

Important: Some functions in the list box will not work in all applications, and some may be incompatible with the selected trigger keys, particularly combinations involving the CTRL key.

Programming Example: This example describes assigning a Cut & Paste command using a combination of the right and middle mouse buttons.

1. Click on Button Actions. From the To perform this Action... box, select Paste.
2. In the ...enter this: box, click on Button and select Middle.
3. Click on OK. Again click on Button Actions, but this time select Cut in the To Perform this Action... box.
4. In the ...enter this: box, click on Button and select Middle+Secondary. Click on OK and exit the control panel.

It is now possible execute a Cut & Paste task using mouse commands.

Appendix

Configuring the Performance Mouse in DOS

If you selected "Install DOS and Windows Drivers" during install, follow these steps.

1. In the Configure DOS Driver window, select the following:
 - Microsoft Compatible (2-button):** Select this option to use the Performance Mouse like a standard 2-button mouse.
 - Mouse Systems Compatible (3-buttons):** Select this option to take advantage of all the Performance Mouse's DOS operation and control center features.
 - COM1, etc.:** Identify the COM port where your mouse is located.

NOTE: This mouse is not a PS/2 device. Do not select that option.

 - English, etc.:** Select the language to use in the control panel.
2. Select OK to have the changes made automatically to your AUTOEXEC.BAT, or copy the command lines to do it yourself after the install is complete.
3. Click OK to exit the installation.

Using the Performance Mouse in DOS

The options available in the DOS control center are the same as those offered through the Windows control panel. If you need more information regarding one of those options, please see the appropriate section earlier in this guide.

To enter to DOS Control Center so you can configure your mouse, change to the directory where the mouse files are located. This is C:\INFOMOUS if you did not change the directory during install. Once in the correct directory, type **INFCCDOS** and press <ENTER>. The DOS Control Center displays.

Assistance

If you experience difficulties and cannot find solutions within this guide, contact Info's Technical Support Department at (408) 374-5500, Monday through Friday, between 8:00 AM and 4:30 PM, Pacific Time. If you wish, you may FAX questions to (408) 378-1068. Provide a daytime phone number for return contact. We maintain a BBS at (408) 378-4799.

If all of our technicians are occupied, please leave your name and phone number on our voice mail system. This system is intended to avoid excessive "on hold" waiting. You and your questions are important to us and we will respond as quickly as possible. After hours calls are returned the following working day.

Limited Warranty

Info warrants this product to be free of manufacturing defects, both materials and workmanship for a period of one year from the date of purchase. In the event of a defect, Info will repair or replace, at our option, this product free of charge, including parts, labor, and return via surface postage. This warranty does not cover damage, loss, abuse, misuse, unauthorized repair, shipping damage, natural phenomena, or effects of use other than intended. Info is not responsible for consequential damages, including but not limited to, lost profits, lost sales, loss of use, or injury to property.

For service, contact Info at (408) 374-7290 and request a "Return Authorization" (RA) number. Note the RA number on the exterior of the package. Ship the product to:

Info Service Center
541 Division Street
Campbell, CA 95008

