



**Info**

541 Division Street

Campbell CA, 95008

Phone (408) 374-7290 • FAX (408) 378-1068

Copyright © 1995 All rights reserved. No portion of this document may be reproduced without prior written authorization.

Info Performance Mouse

Copyright © 1995, All Rights Reserved

The material in this document is for informational purposes only, and is subject to change without notice. The manufacturer assumes no responsibility for errors or omissions in this document, nor any damages resulting from the use of the information contained herein.

Any trademarks, registration marks, or brand names mentioned within this guide are the property of their respective owners.

**IPM2.596240**

# **Performance Mouse**

**For Macintosh**

**Model IPM2  
User's Guide**



# Welcome

We believe the Macintosh user expects sophisticated products that are easy to use, affordably priced, and improves the quality and convenience of their computing experience. Info has designed this product with that concept in mind.

## **System Requirements**

A Macintosh computer with an ADB port. If you are using a Macintosh PowerBook, the Performance Mouse's software will terminate upon entering the "sleep mode," due to the operating system architecture. The software is recognized after a restart is performed.

## **Hardware & Software Installation**

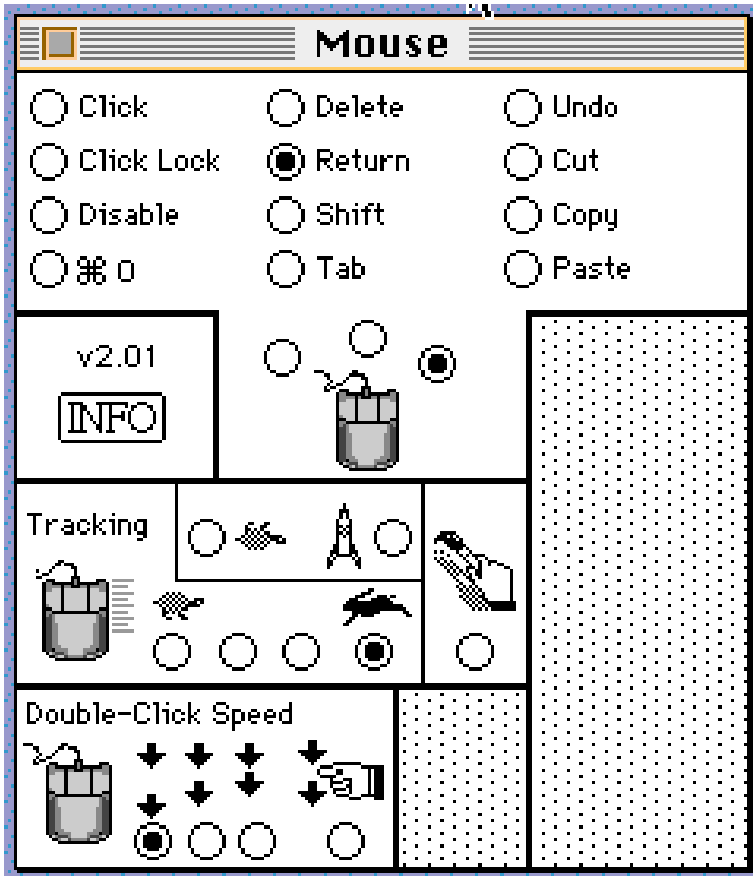
Start with the system's power off. Plug the Performance Mouse into the ADB port found on the keyboard. Be sure to correctly align the connector with the port.

The 3.5" disk that comes with the mouse contains the Performance Mouse Control Panel software. Although the mouse's left button operates as the standard click and mouse movement results in cursor movement, all other functions cannot be accessed without software installation.

Turn on the computer's power and bring up the Desktop. Insert the Performance Mouse Disk into the system's disk drive. Open the disk and copy the Performance Mouse file into the System Folder. If using System 7, the file will automatically be copied to the Control Panel folder. With System 6.X, the file must reside in the System Folder Directory; not within another folder inside the System Folder.

# Programming

After installing the software, restart the system. Under the Apple on the Menu Bar, select Control Panels. Use the elevator bar to locate Mouse. Select it and the Mouse Control Panel will be displayed.



Here, the mouse's buttons, tracking sensitivity, and double-click speed are controlled. The pages that follow provide instructions for each.

## Button Functions

Around the graphic of the mouse are three radio buttons: Each radio button corresponds to the left, middle, and right button on the Performance Mouse. Above the graphic is a listing of 12 keyboard/menu items. Each function has a corresponding radio button.

Select a radio button that corresponds to a mouse button. The assigned function is indicated by a selected radio button in the function listing. Select a mouse button's function by clicking on the desired function's radio button. Repeat the process for each button.

**Important:** It is not possible to change the left button's Click designation unless at least one of the other two buttons has been assigned to Click.

Perhaps the most useful option is provided by the Command Icon. Up to 2 of the mouse's buttons can be assigned a combination of the Command key and a letter. For example, Command P launches the printing process in most applications. To assign a button this function, click on the Command Icon radio button: The message **Please type a key to customize this button** is displayed. Enter the letter of the desired command, in this example "P."

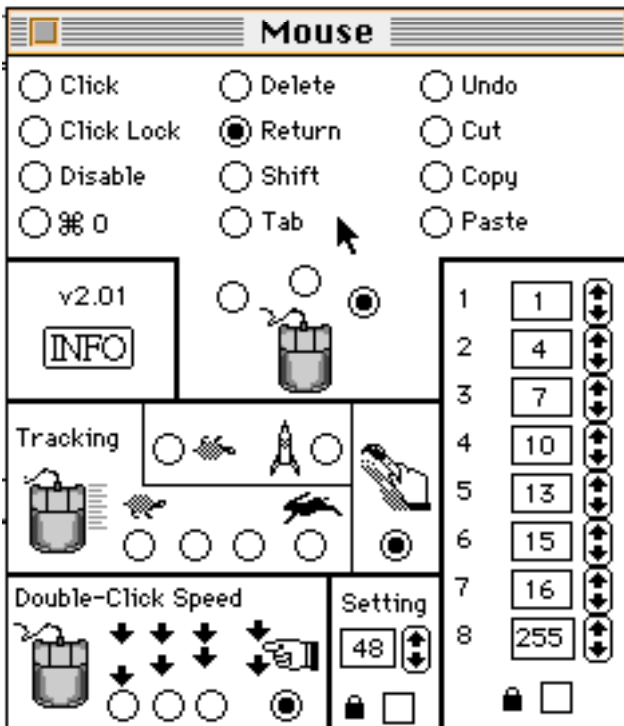
## Tracking Speed

The Performance Mouse operates at a default of 200 Dots Per Inch (dpi). "Dots" are translated into cursor movements (pixels) on a one-to-one basis: One inch of mouse movement results in 200 pixels of cursor movement. Cursor movement is accelerated disproportionately to mouse movement as the result of factors called "pixel multipliers". Therefore, accelerated mouse movement results in relatively higher rates of cursor movement.

**Standard Tracking:** To change the tracking speed, click on any of the radio buttons in the Tracking section. The four radio buttons range from the slow speed (Turtle) to the rapid speed (Rabbit). The Dead Turtle and Rocket represent very slow and very fast tracking, respectively.

**Custom Tracking:** Click on the Paintbrush radio button. Two columns appear: The right hand column values are velocity thresholds (1-255). The left hand column values represent the “Pixel Multipliers” (1-8). The thresholds displayed will be those of the previously selected tracking speed setting. For example, if the Rabbit was selected prior to the Paintbrush, the thresholds displayed are those set by the Rabbit command.

At “rabbit speed”, the first velocity threshold is 1 and its corresponding pixel multiplier is 1. When the ball is rotated at a speed from zero up to one inch per second, the base rate of 200 DPI is multiplied by a factor of one.



When the mouse ball rotational speed exceeds one inch per second (1" per second up to 4" per second), the base rate of 200 DPI is multiplied by the next pixel multiplier (2) and the cursor moves 400 DPI for every inch of ball rotation. This process continues, up to a pixel multiplier of 8 depending on ball rotation. By adjusting the velocity thresholds at the different levels, cursor acceleration is altered to suit specific application or personal preferences.

To set custom tracking speed, click the Paintbrush radio button in the Tracking section and adjust the velocity thresholds by clicking or pressing on the up/down arrows.

Once the desired velocity thresholds selected, click the Lock Box at the bottom of the column to save the selected settings.

## **Double-Click Speed**

To define the time interval that distinguishes between a double-click and two single clicks, click once on any the three radio buttons in the Double-Click Speed box. The left button is the slowest setting, interpreting a double click within 0.8 seconds. The middle button is set at a default of less than 0.5 seconds, and the right button is set at an interval of less than 0.33 seconds. After a double click speed is selected, the Mouse Icon that appears next to the buttons will flash at the interval selected.

## **Customizing Double-Click Speed**

To customize the double-click speed, select the radio button below the Hand icon. The box to the right will clear, and the speed setting will appear in "ticks" (60 ticks = 1 second). Click or press the up/down arrows to adjust the setting from 4 ticks (1/15 second) to 60 ticks (1 second). Adjustments can be made in steps of 4 (i.e., 4, 8, 12, etc.). Once customized, save by clicking the lock box.

# Using the Performance Mouse

The performance Mouse operates like the original factory supplied mouse. The most important difference is the addition of two additional buttons and the control software.

Button programming decisions can be made to best suit any task or application. Because many applications "highlight" obvious choice prompts, many users dedicate a button to "return": This eliminates the need to point to many on screen buttons (OK, for example).

To avoid having to get accustomed to new tracking sensitivity, it's suggested that care be taken to adjust the Performance Mouse's tracking speed to a level similar to that used with the original mouse.

## **Care & Maintenance**

By keeping the Performance Mouse free of dirt and grime, it will provide years of dependable service. Use the Performance Mouse in a clean environment, preferably on a mouse pad, and with clean hands.

If the ball becomes dirty, the mouse may provide erratic tracking. Often times, rapid spinning of the ball will dislodge a piece of grit or dirt that is causing the problem. If this approach fails, the ball must be removed and cleaned.

To do so, turn the ball retainer ring found on the underside of the mouse: The retainer has Open and Lock direction arrows. Remove the ball and clean with mild soap and water. Be sure to allow the ball to dry thoroughly before reinstallation.

# **Assistance**

If you experience difficulties and cannot find solutions within this guide, contact Info's Technical Support Department at (408) 374-5500, Monday through Friday, between 8:00 AM and 4:30 PM, Pacific Time. If you wish, you may FAX questions to (408) 378-1068. Provide a daytime phone number for return contact. We maintain a BBS at (408) 378-4799.

If all of our technicians are occupied, please leave your name and phone number on our voice mail system. This system is intended to avoid excessive "on hold" waiting. You and your questions are important to us and we will respond as quickly as possible. After hours calls are returned the following working day.

## **Limited Warranty**

Info warrants this product to be free of manufacturing defects, both materials and workmanship for a period of one year from the date of purchase. In the event of a defect, Info will repair or replace, at our option, this product free of charge, including parts, labor, and return via surface postage. This warranty does not cover damage, loss, abuse, misuse, unauthorized repair, shipping damage, natural phenomena, or effects of use other than intended. Info is not responsible for consequential damages, including but not limited to, lost profits, lost sales, loss of use, or injury to property.

For service, contact Info at (408) 374-7290 and request a "Return Authorization" (RA) number. Note the RA number on the exterior of the package. Ship the product to:

**Info Service Center  
541 Division Street  
Campbell, CA 95008**